

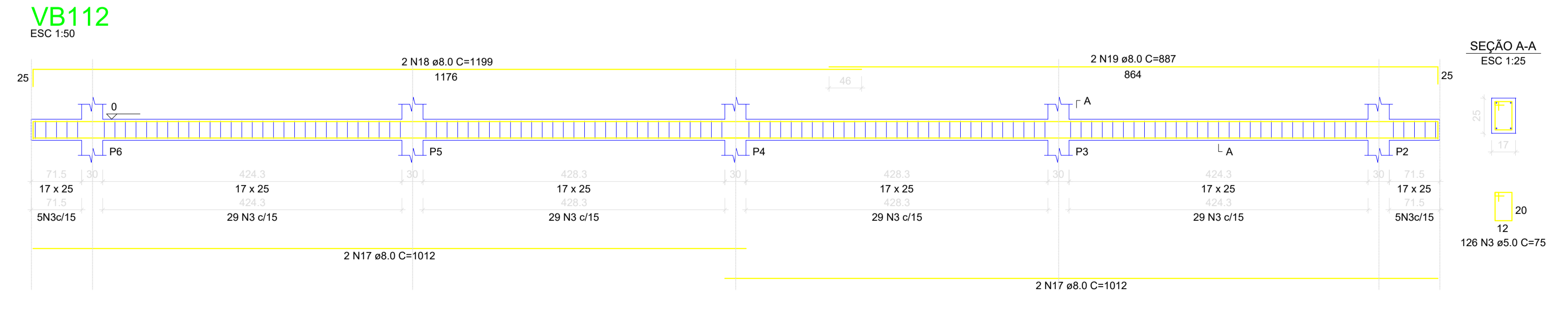
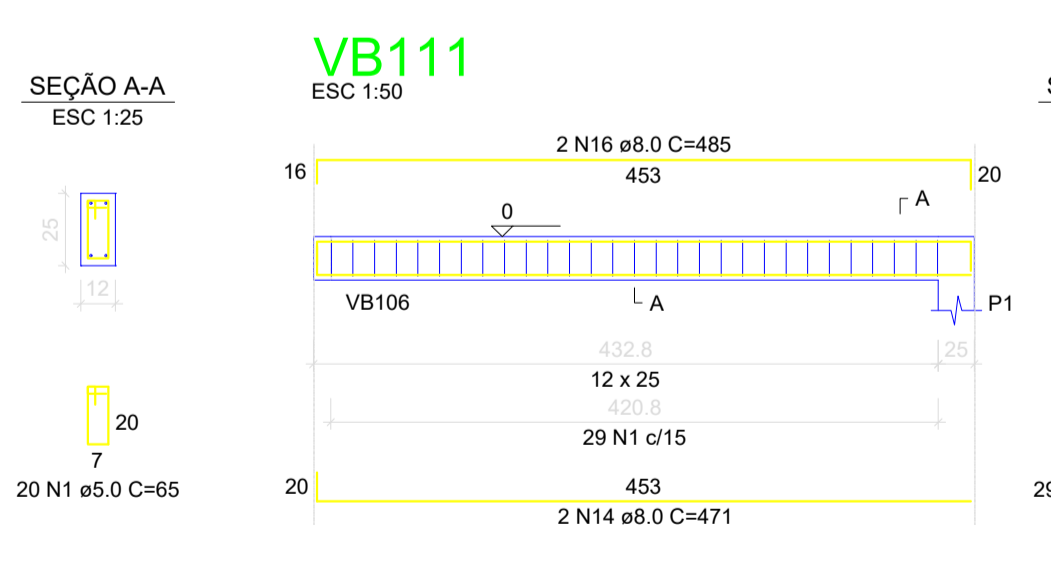
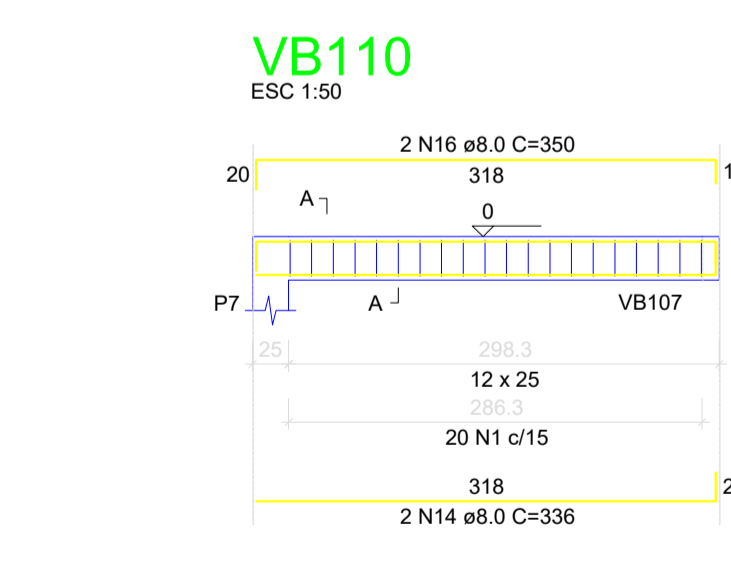
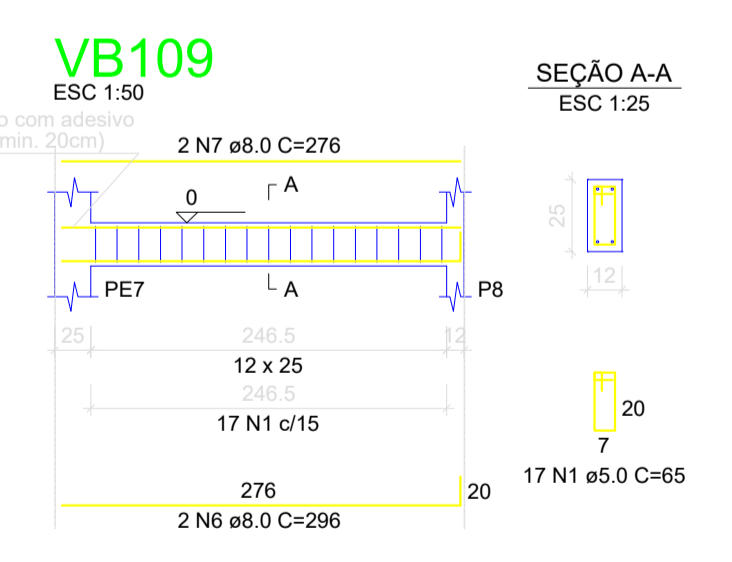
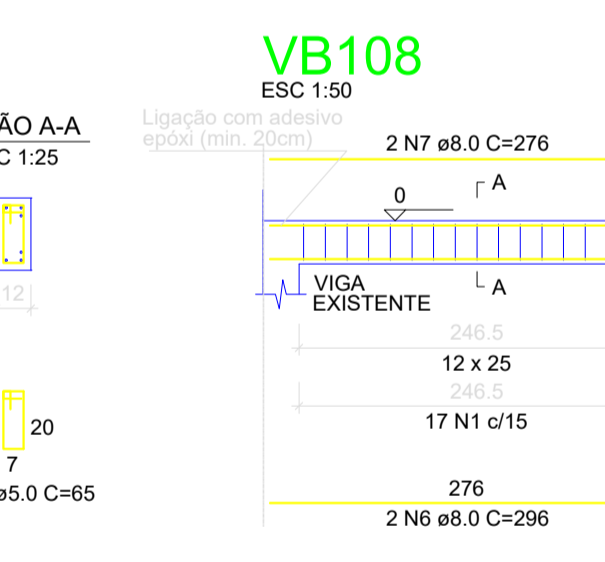
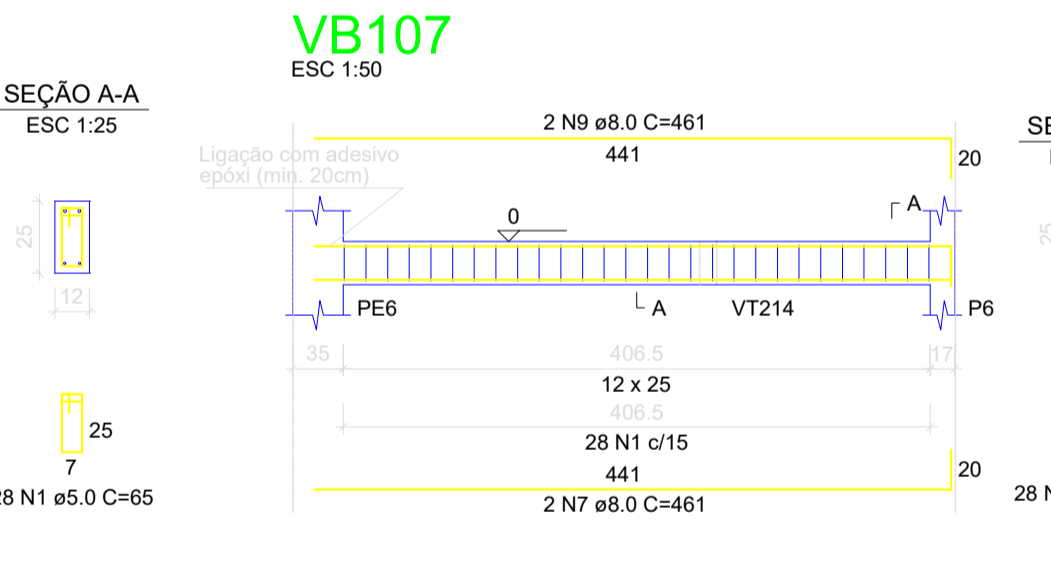
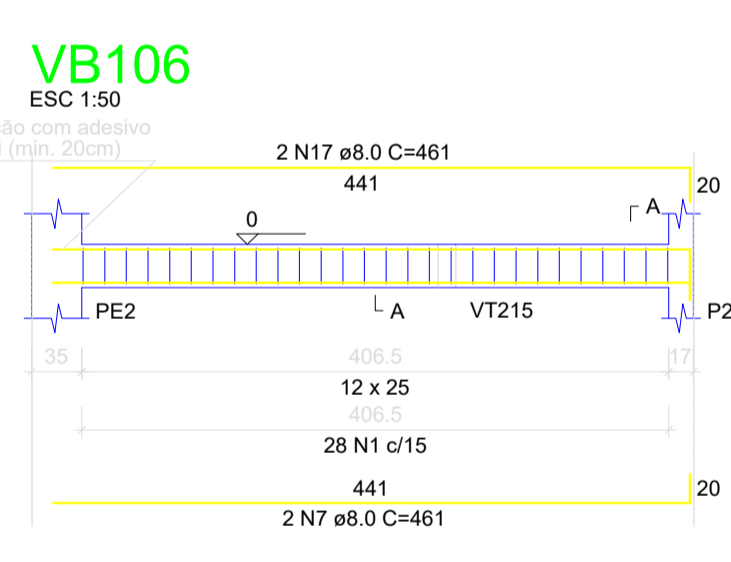
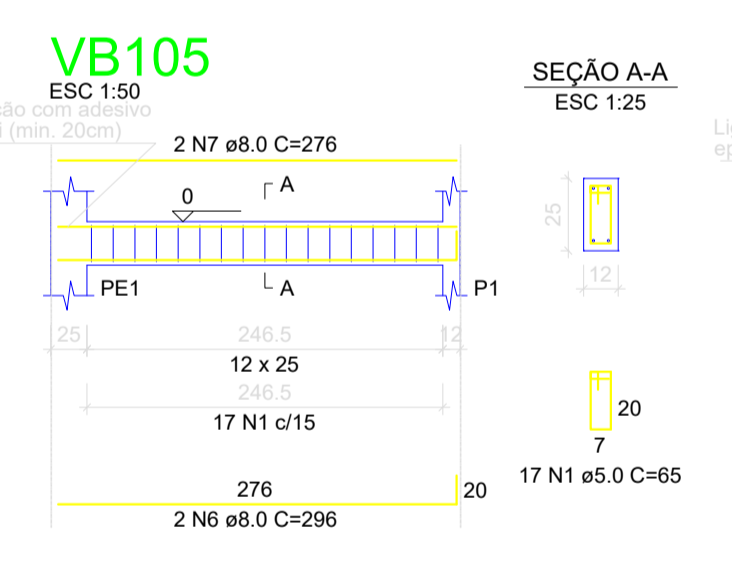
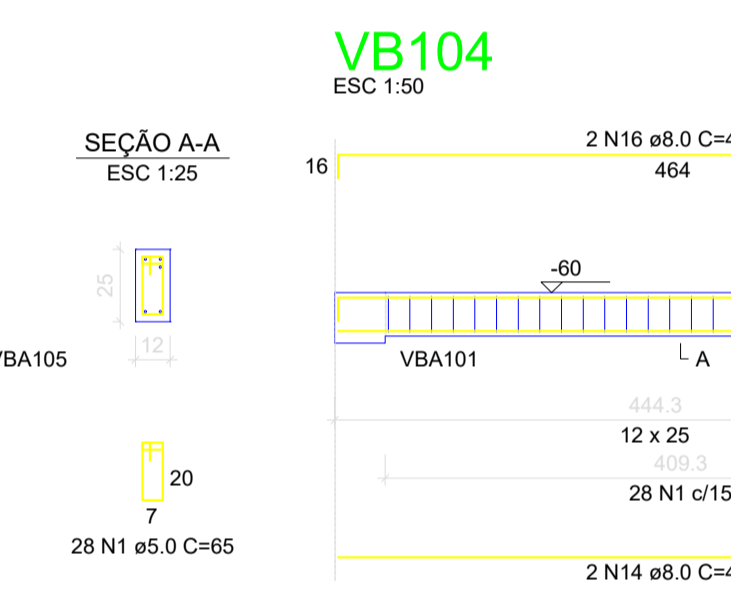
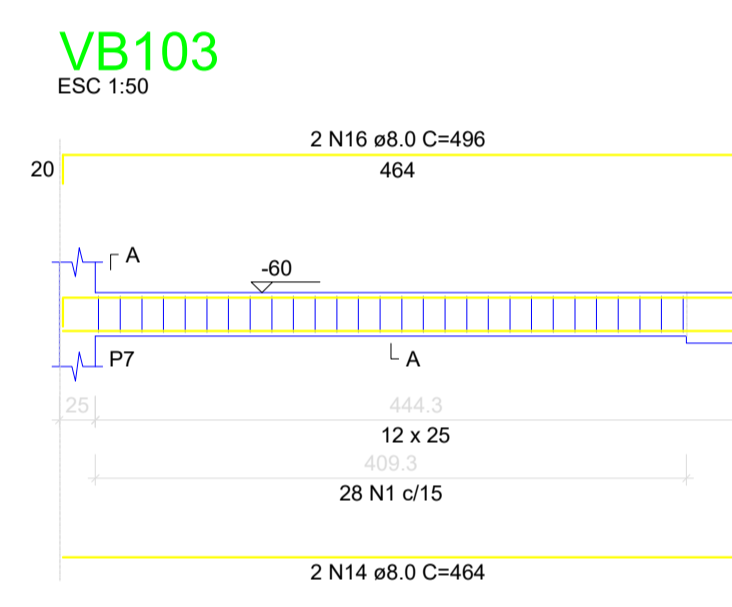
**Legenda dos pilares**

- Pilar que passa
- Pilar existente
- Viga baldrame alavanca

**RESUMO DO AÇO VIGAS BALDRAME NÍVEL -60 E 0**

AÇO	DIAM (mm)	C.TOTAL (m)	PESO (kg)
CA50	6.3	305.1	74.7
CA50	8.0	376.1	148.4
CA60	12.5	108.0	102.1
CA60	5.0	261.6	40.3
PESO TOTAL (kg)			321.0
CA50			48.3
CA60			40.3

Volume de concreto (C-25) = 4.45 m<sup>3</sup>  
Área de forma = 43.84 m<sup>2</sup>



**PROJETO ESTRUTURAL**

**QUADRA COBERTA**

ENDEREÇO: RUA MANOEL LUSTOSA MARTINS - CENTRO  
MUNICÍPIO DE GALVÃO - SC

PROPRIETÁRIO: PREFEITURA MUNICIPAL DE GALVÃO - SC  
CNPJ 83.009.902/0001-16

RESPONSÁVEL TÉCNICO: Engº Civil Amarildo M. Ribeiro - CREA-SC 156004-7

RESPONSÁVEL TÉCNICO: Engº Civil Jean C. Tortelli - CREA-SC 182379-4

RESPONSÁVEL TÉCNICO: Engº Eletricista Charlan Smaniotto Luzzatto - CREA-SC 127695-8

DESENHO CAD: Eiveltro Jesus Passini - CFT-01901295907  
Jaison R. dos Santos - CREA SC 178513-5

DESCRIÇÃO: PLANTA DE FORMAS VESTIÁRIOS  
SAPATAS  
VIGAS BALDRAMES NÍVEL -0,60  
VIGAS BALDRAMES NÍVEL 0,00

**EST - 02/06**

ÁREA: 1.864,88 m<sup>2</sup> ESCALA: INDICADA

CONTATO: E-MAIL: amnoroste@amnoroste.org.br - TEL: (49)3344-1991