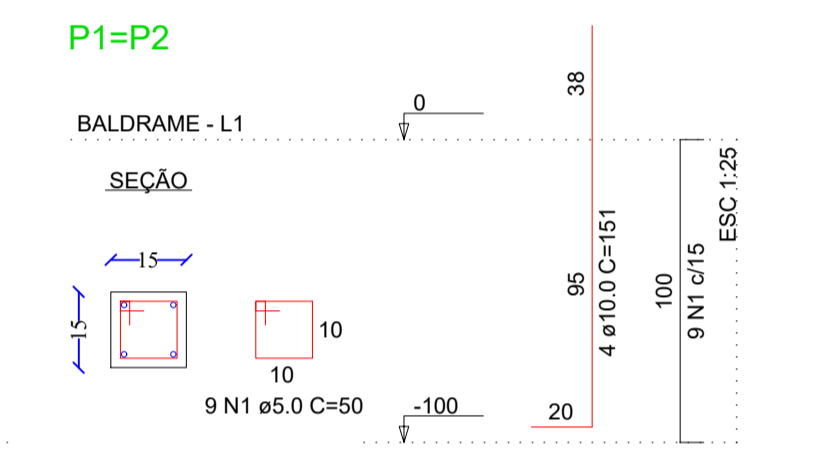
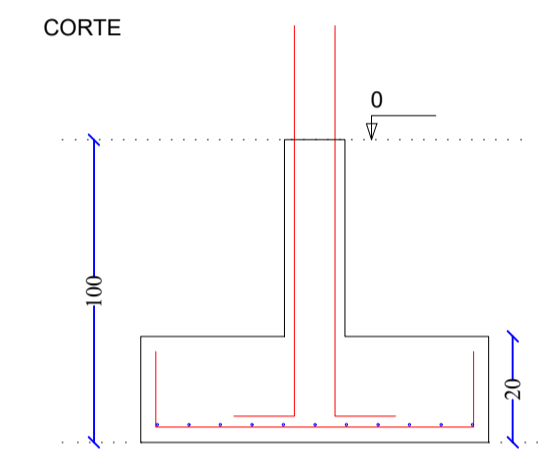
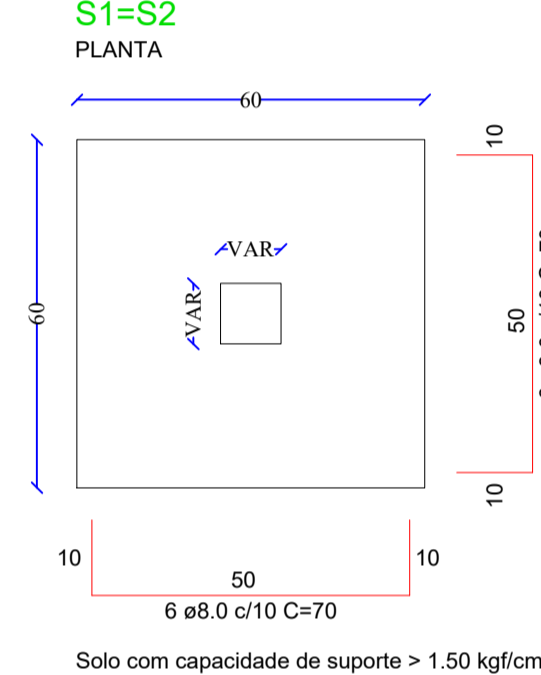
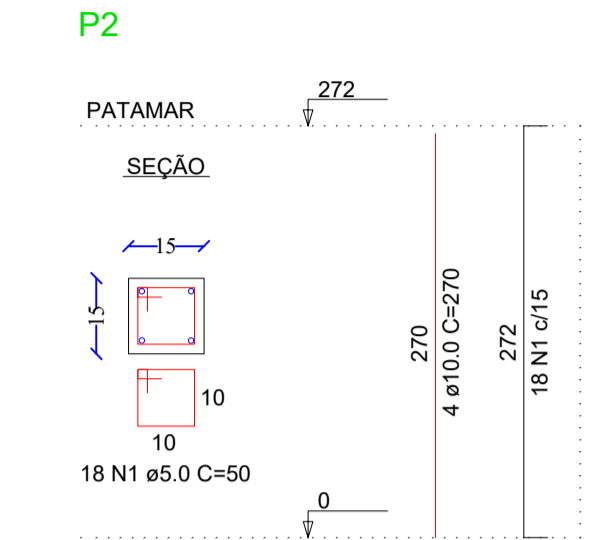
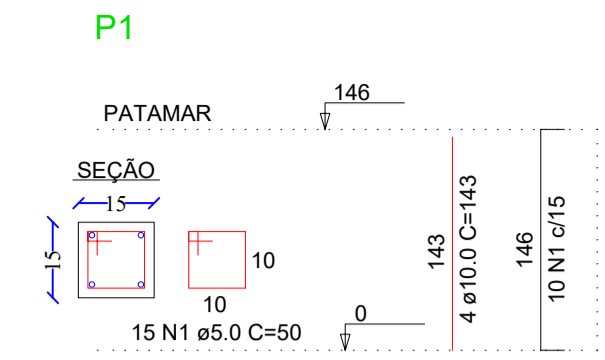
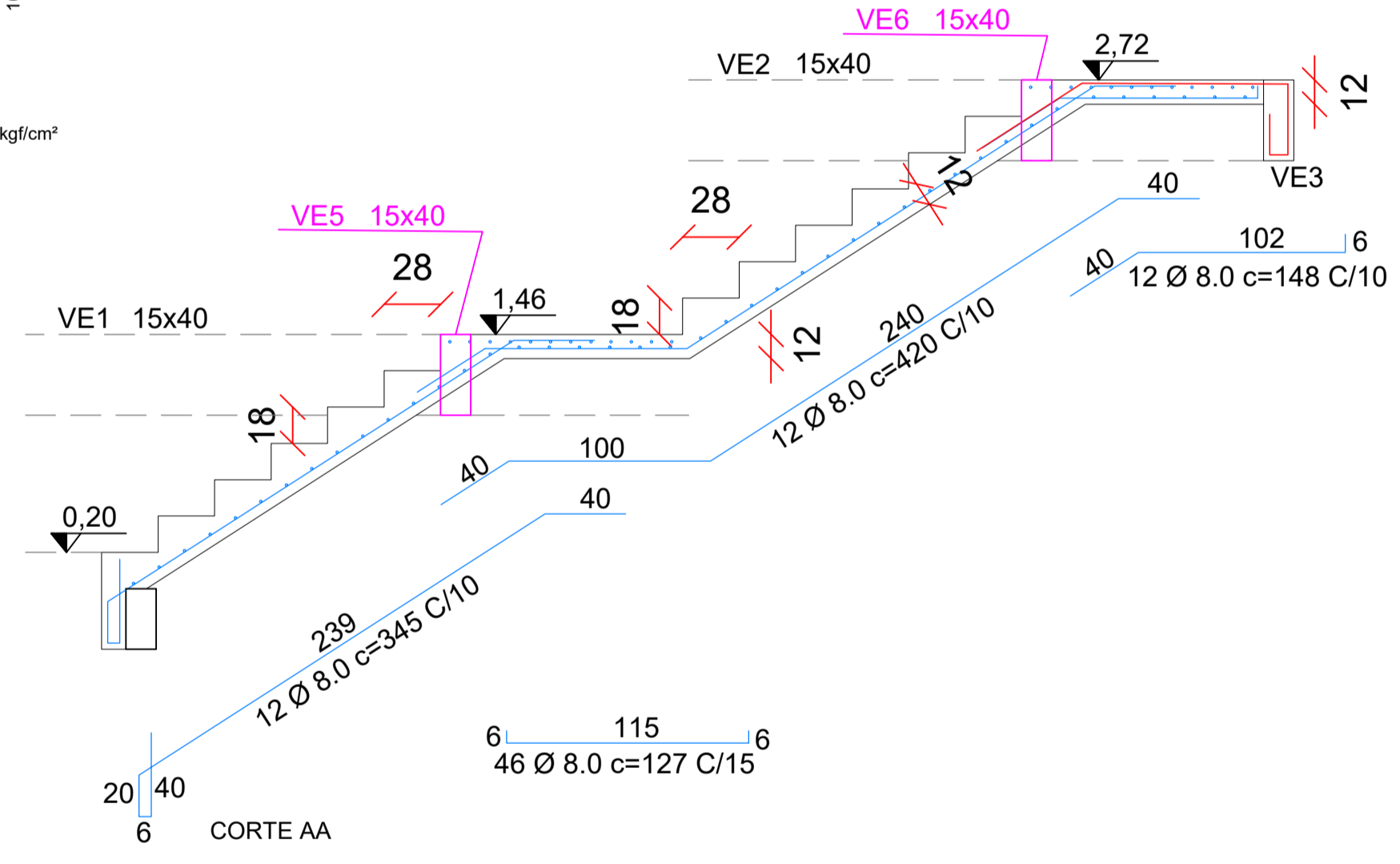


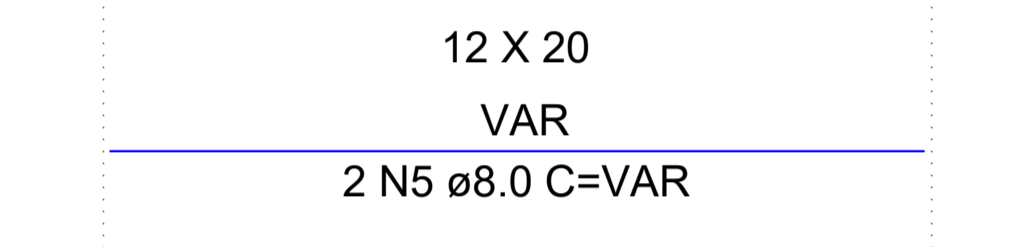
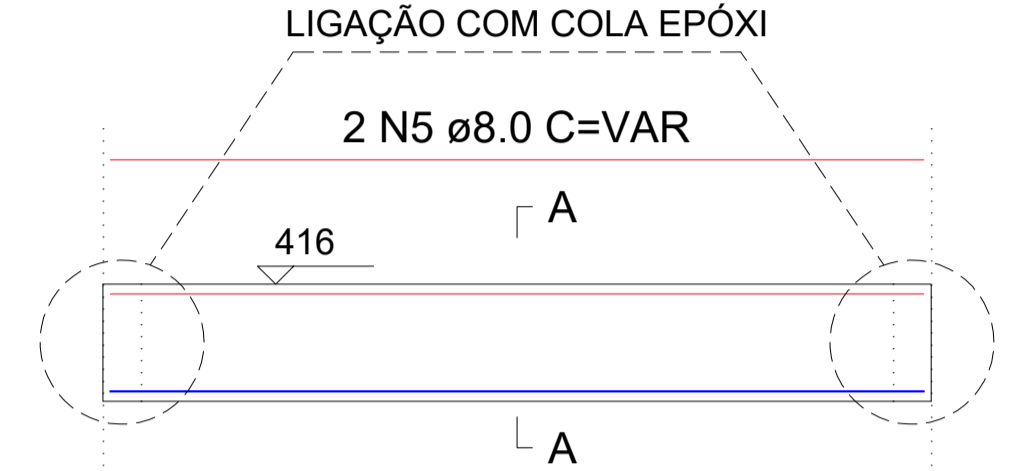
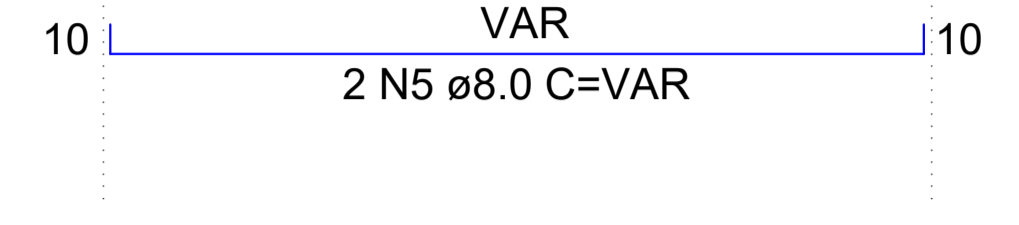
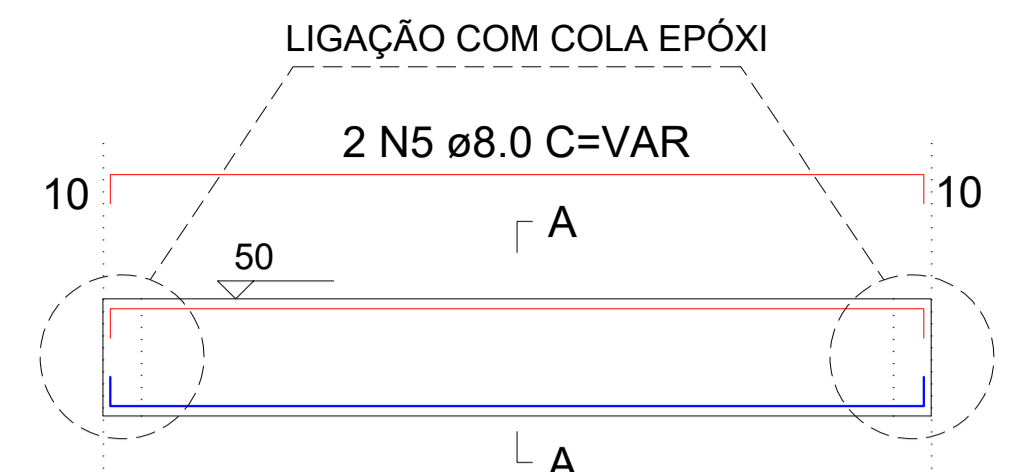
PLANTA DE FORMAS CINTAMENTO
Escala 1/75



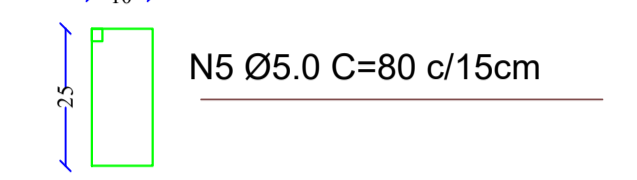
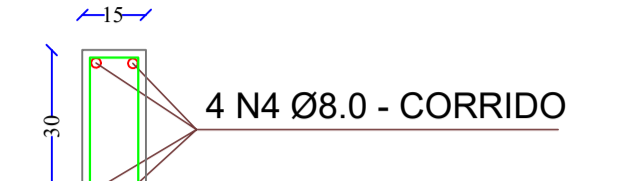
Solo com capacidade de suporte > 1.50 kgf/cm²



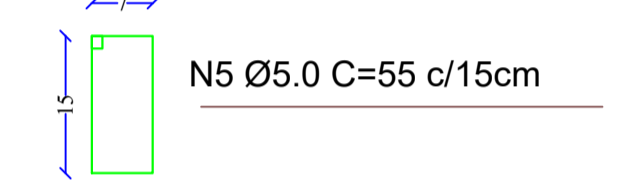
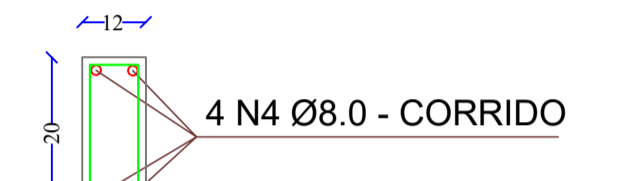
DETALHE CONSTRUTIVO ESCADA
Escala 1/50



VB1 - VB2 - VB3
VIGAS BALDRAMES
8,55ml CORRIDO



VC1 - VC2
VIGAS BALDRAMES
4,30ml CORRIDO

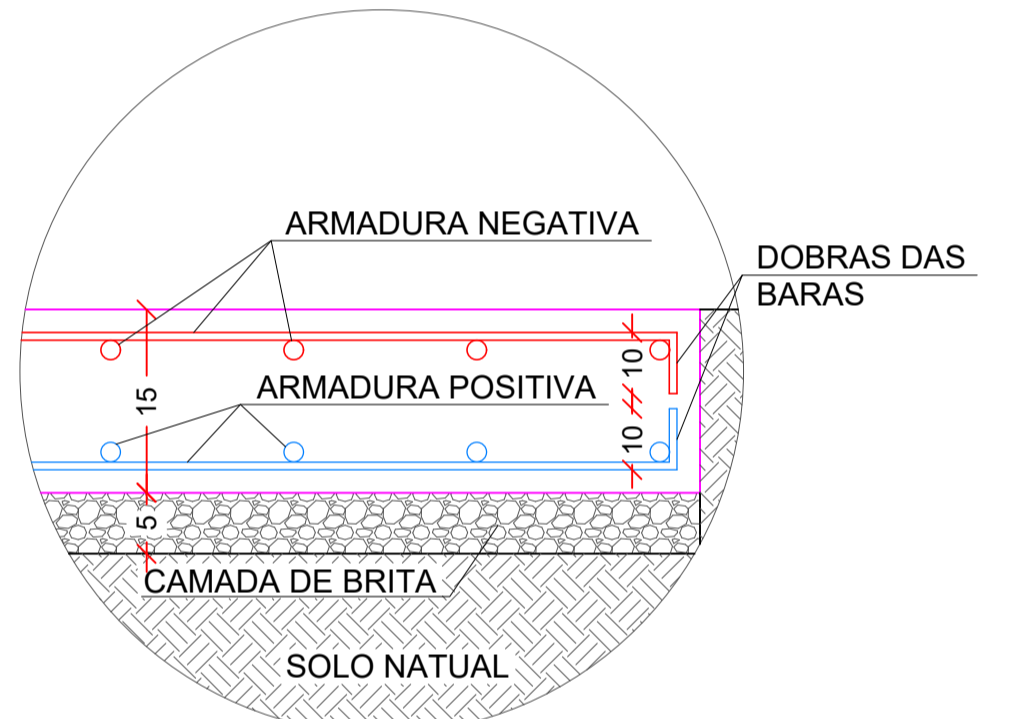
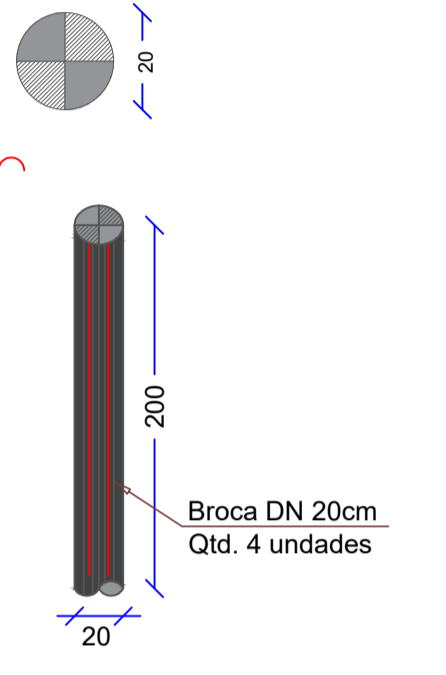


RESUMO DO AÇO VIGAS E RADIER

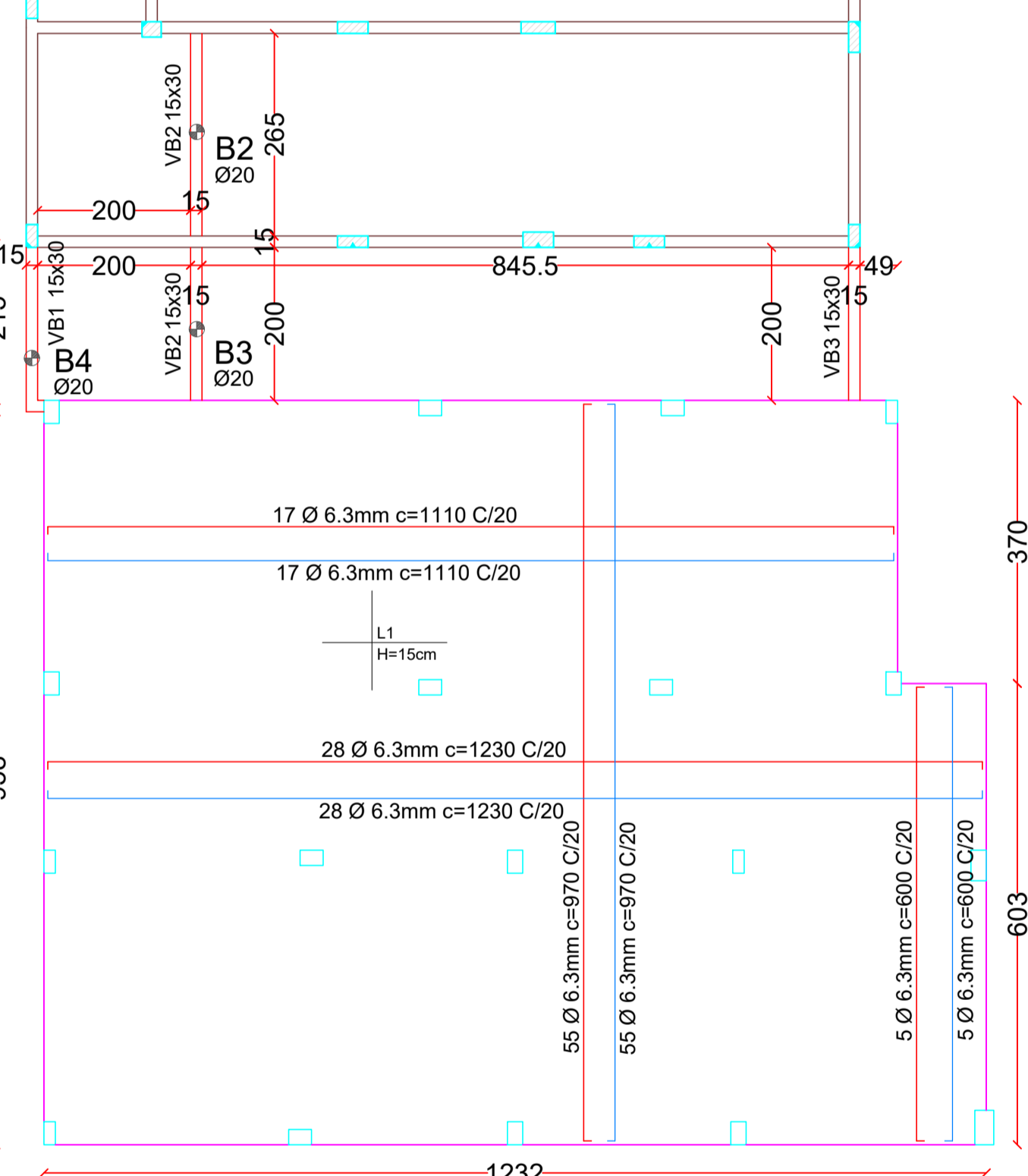
AÇO	DIAM (mm)	PESO (kg)
CA50	8.0	21.9
CA60	5.0	9.4
PESO TOTAL (kg)		31.3
CA50	559.2	
CA60	9.4	

Volume de concreto (C-25) = 17.82 m³
Formas = 13.47 m²
Camada drenante de brita = 5.84 m²
Impermeabilização = 115.00 m²

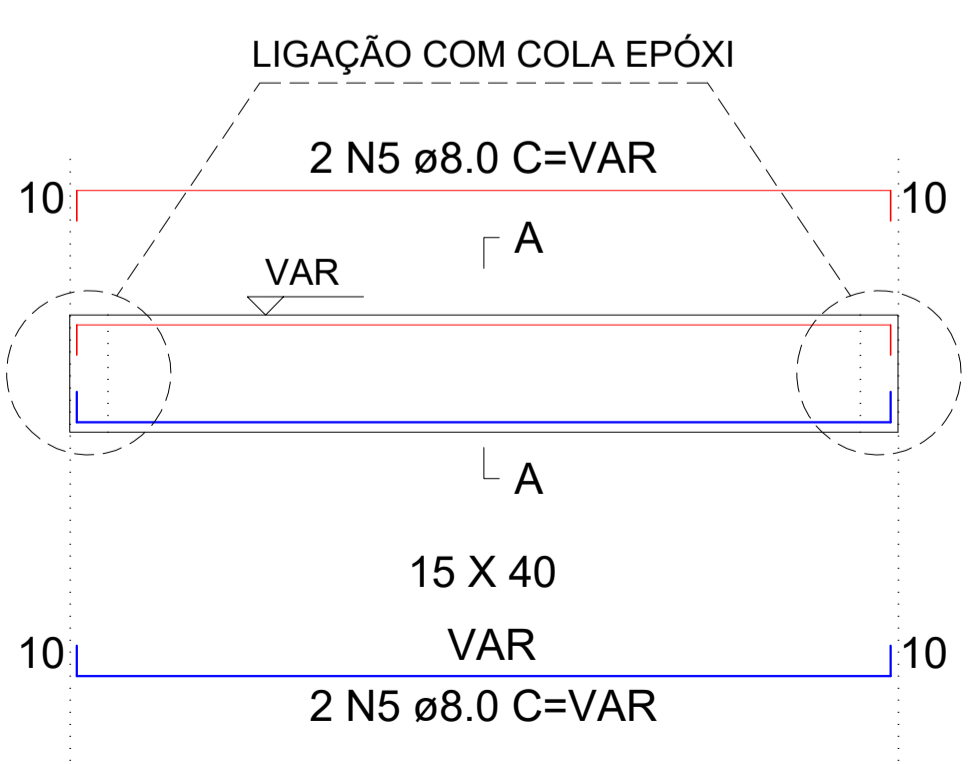
B1 - B2 - B3 - B4



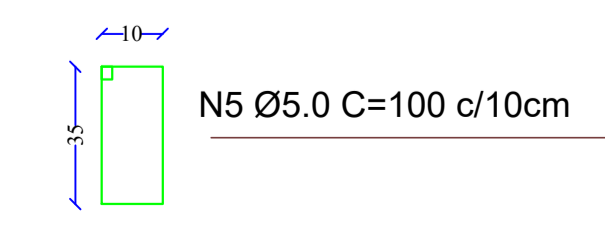
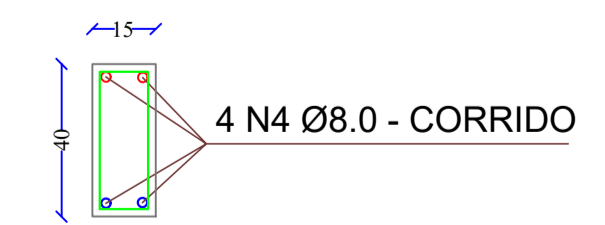
DETALHE CONSTRUTIVO
SEM ESCALA



PLANTA DE FORMAS BALDRAMES
Escala 1/75



VE1 - VE2 - VE3 - VE4
VE5 - VE6 - VE7
VIGAS ESCADA
11,50ml CORRIDO



RESUMO DO AÇO ESCADA E ESTRUTURAS

AÇO	DIAM (mm)	PESO (kg)
CA50	8.0	156.2
CA60	10.0	17.7
CA60	5.0	13.8
PESO TOTAL (kg)		187.7
CA50	173.9	
CA60	13.8	

Volume de concreto (C-25) = 2.98 m³
Formas = 21.10 m²



PROJETO ESTRUTURAL AMPLIAÇÃO POSTO DE SAÚDE DE GALVÃO	
PROJETO ESTRUTURAL	
ENDEREÇO:	RUA SETE DE SETEMBRO - CENTRO GALVÃO - SC
PROPRIETÁRIO:	PREFEITURA MUNICIPAL DE GALVÃO - SC CNPJ 83.059.902/0001-16
RESPONSÁVEL TÉCNICO:	Engº Civil Jean C. Tortelli - CREA-SC 182379-4
RESPONSÁVEL TÉCNICO:	Engº Civil Amarildo M. Ribeiro - CREA-SC 156004-7
RESPONSÁVEL TÉCNICO:	Engº Eletricista Charlan Smaniotta Luzzatto - CREA-SC 127695-8
DESENHO CAD:	Eliveltro Jesus Passini - CFT-01901295907 Jaison R. dos Santos - CREA SC 178513-5
DESCRIÇÃO	PLANTA DE FORMAS BALDRAME DETALHE CONSTRUTIVO RADIER DETALHE CONSTRUTIVO ESCADA DETALHE VIGAS DETALHE TRADO MANUAL
PRANCHA:	01/01-EST
ÁREA TOTAL:	INDICADA ESCALA: INDICADA
CONTATO:	E-MAIL: amnoroste@amnoroste.org.br - TEL: (49)3344-1991